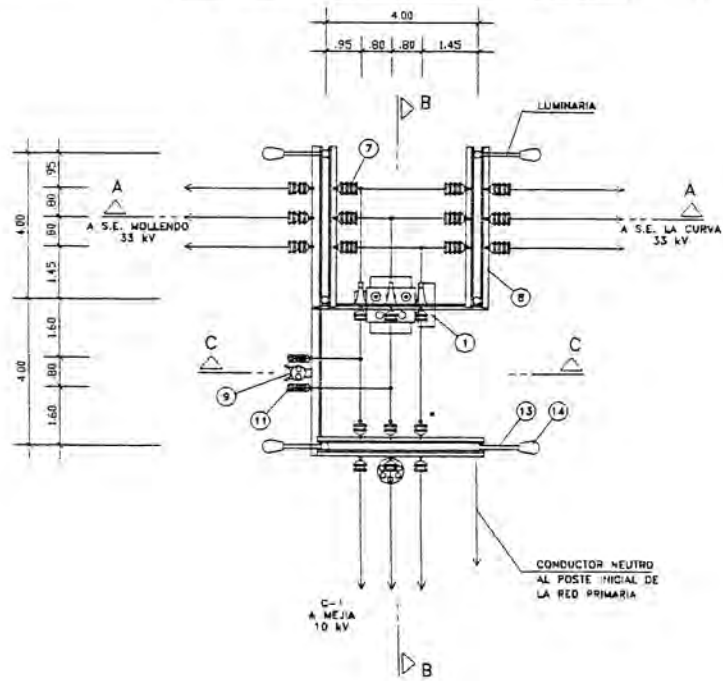
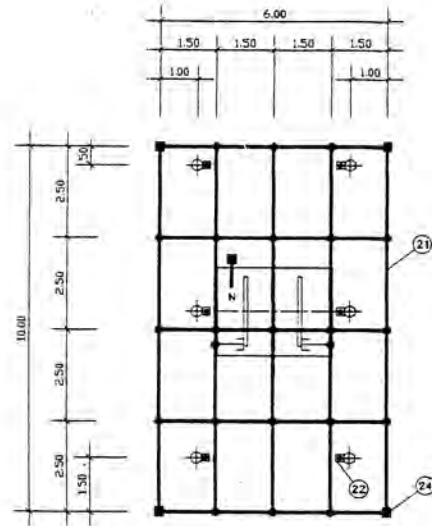


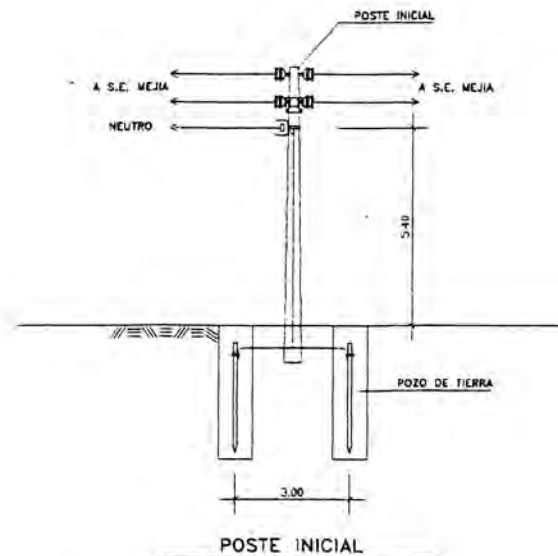
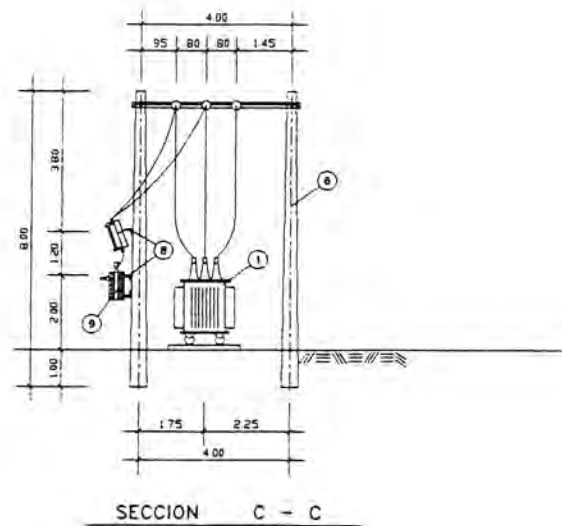
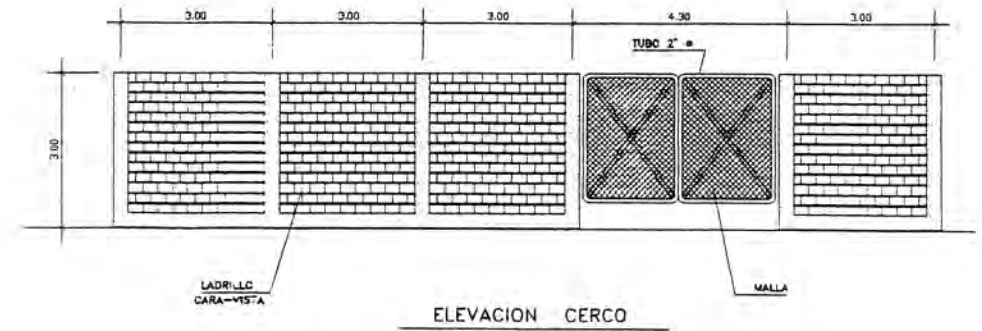
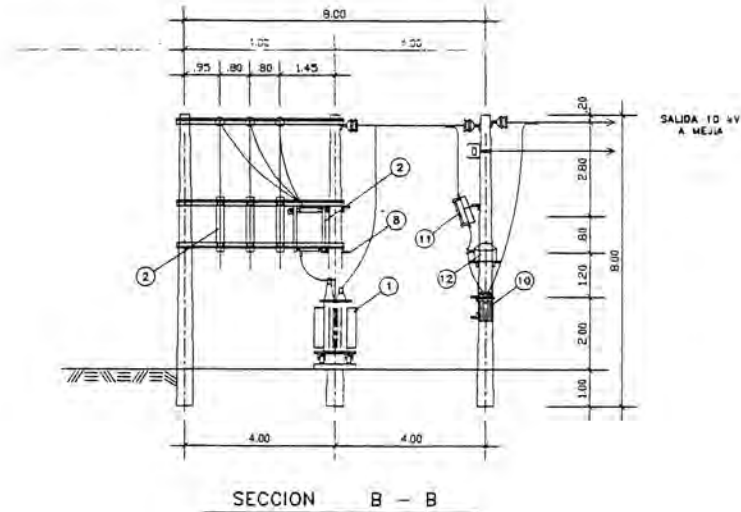
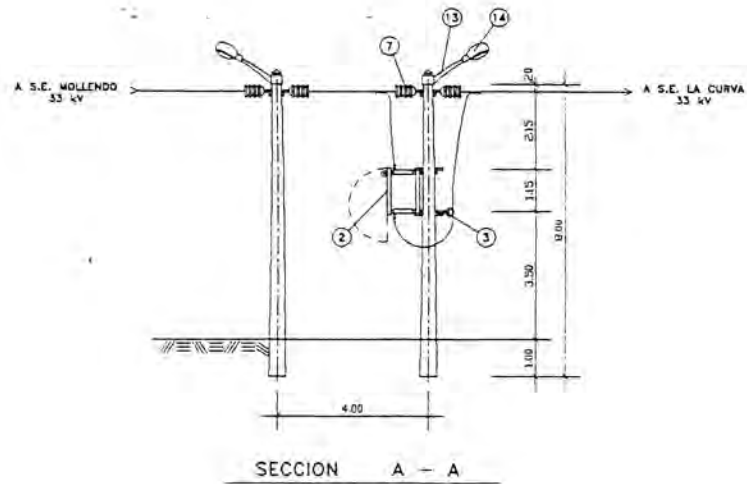
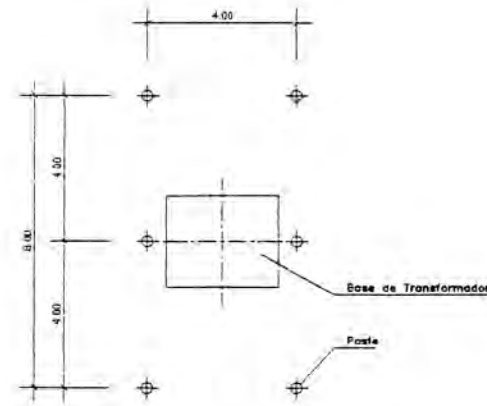
DISPOSICION DE EQUIPOS - PLANTA



MALLA DE PUESTA A TIERRA

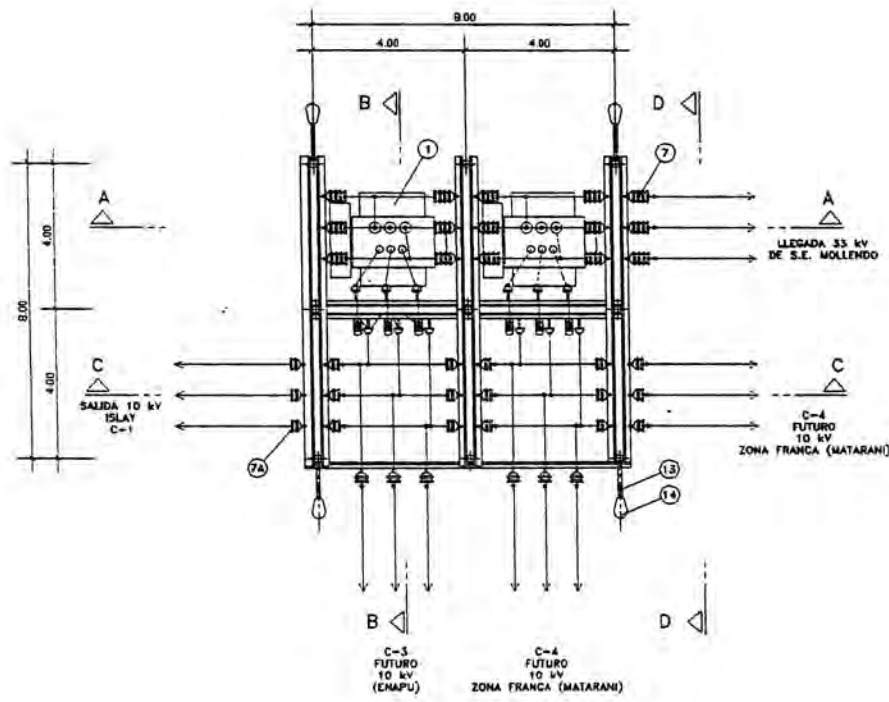


BASES DE CIMENTACION

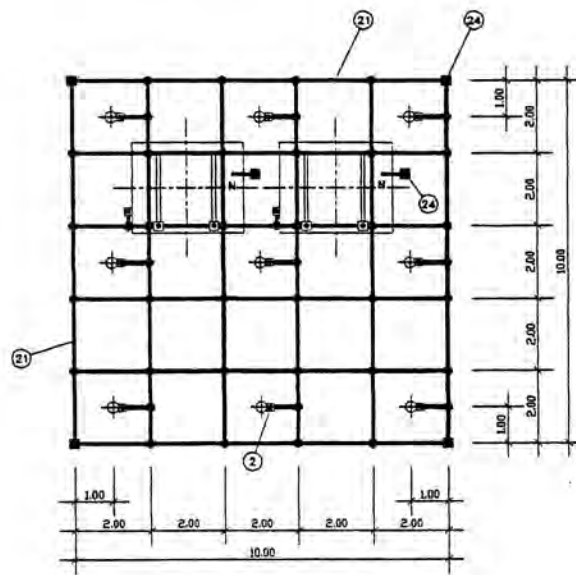


UNIVERSIDAD NACIONAL DE INGENIERIA FACULTAD DE INGENIERIA ELECTRICA Y ELECTRONICA			
ESTUDIO DEFINITIVO DEL SISTEMA ELECTRICO REGIONAL DE MOLLENDO			
SUBESTACION MEJIA 33/10 kV . 1.0 MVA			
FECHA: ENE-95	DISEÑO: D.P.C.	REVISO: C.H.W.	LAMINA: 17
ESCALA: 1:50	DIJUIO: A.C.S.	APROBO:	

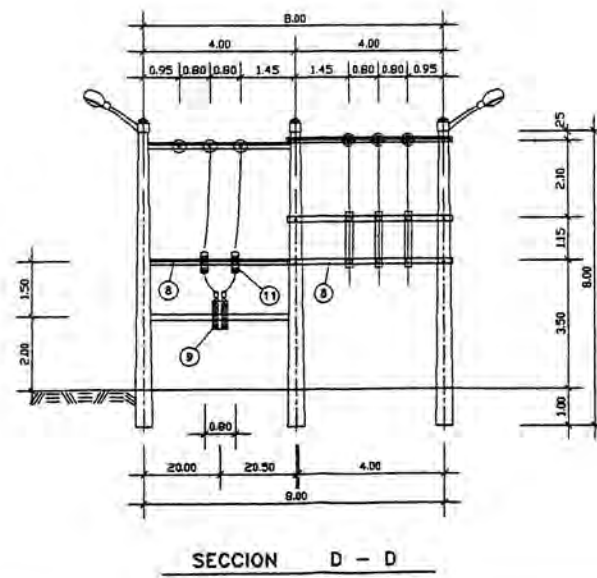
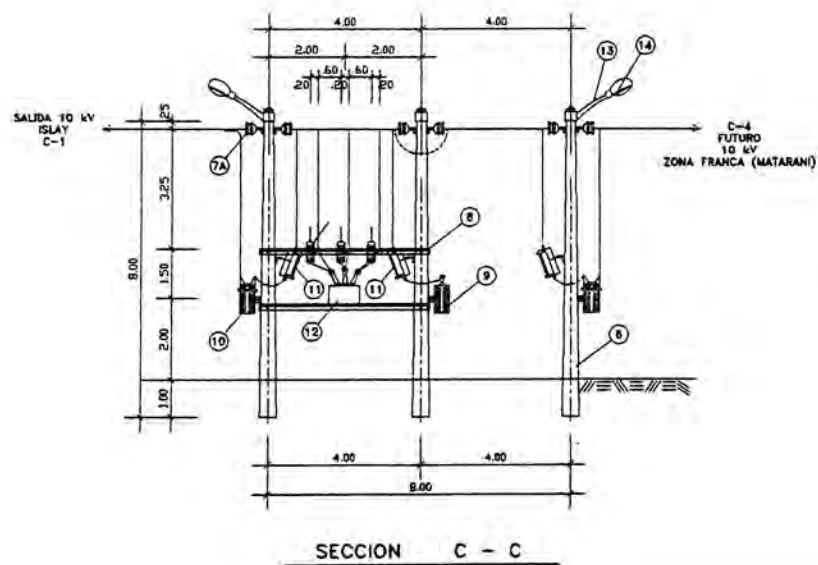
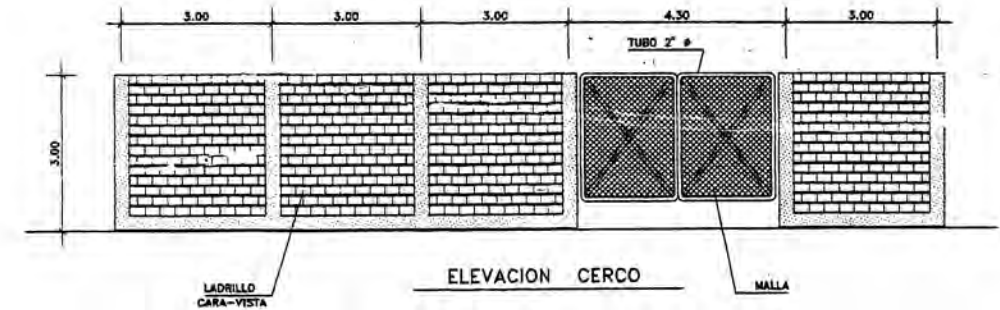
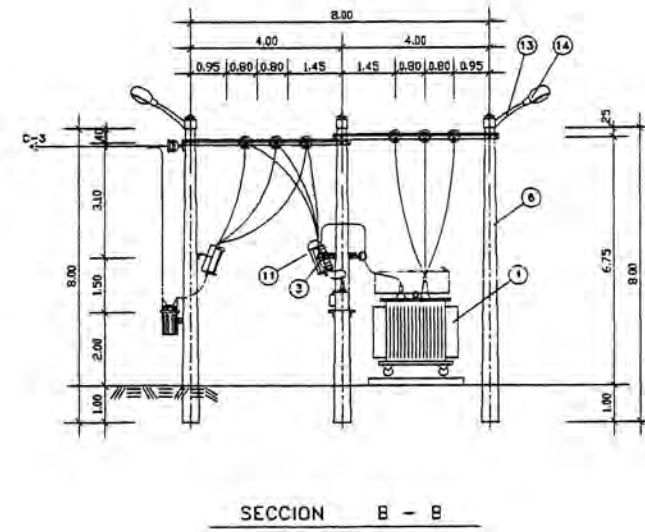
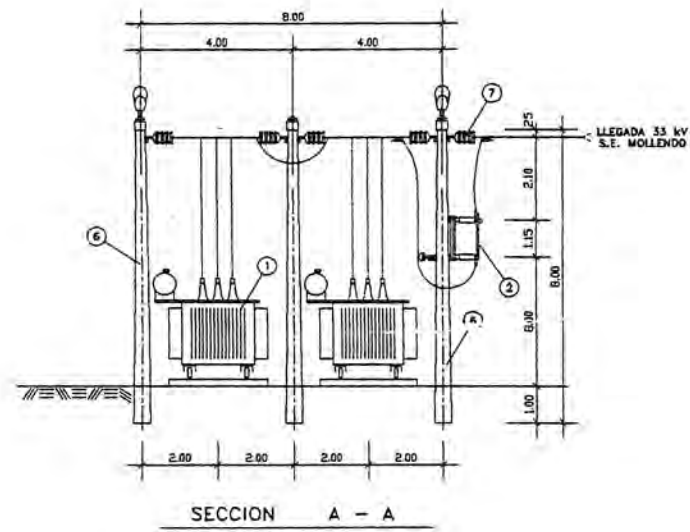
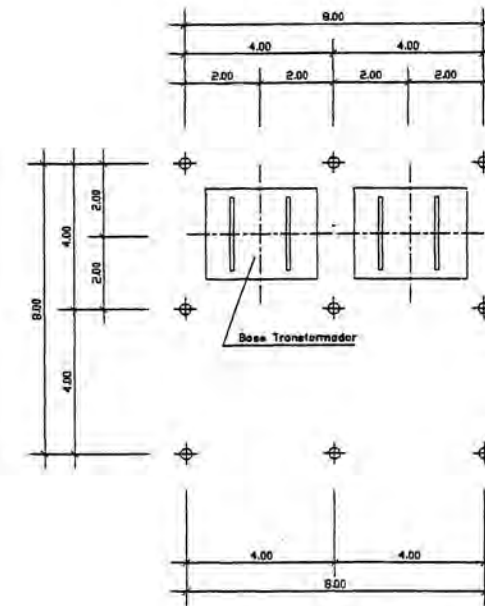
DISPOSICION DE EQUIPOS - PLANTA



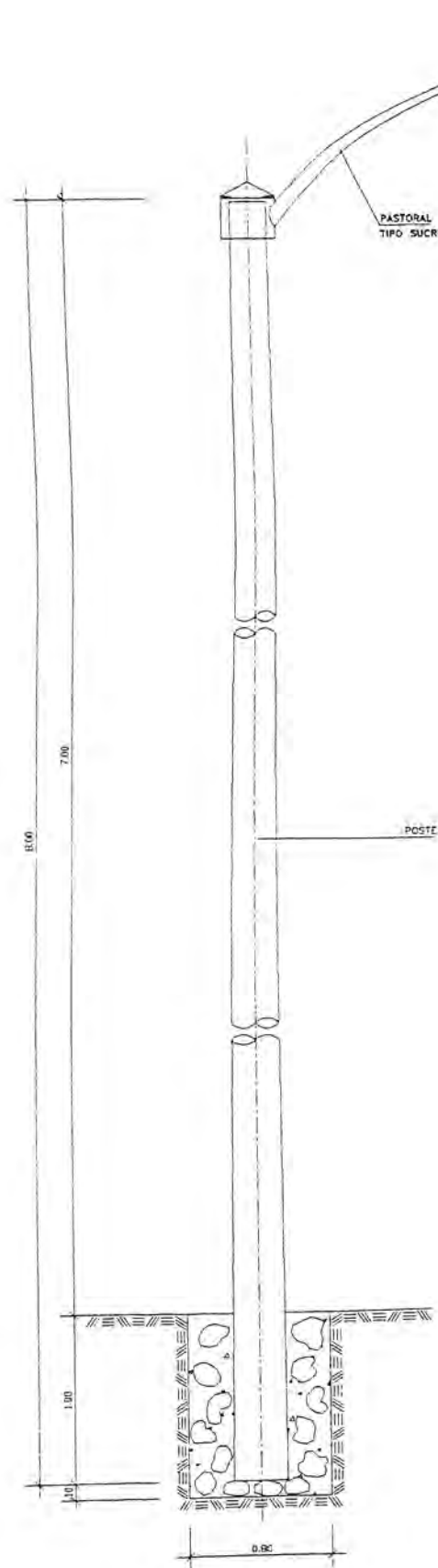
MALLA DE PUESTA A TIERRA



BASES DE CIMENTACION

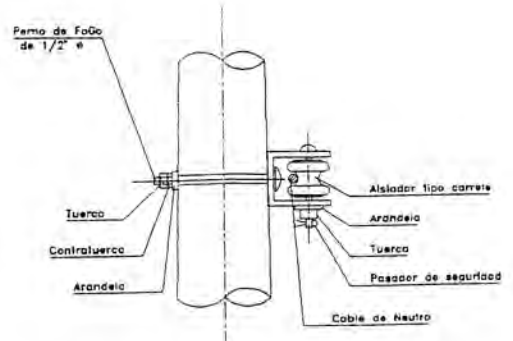
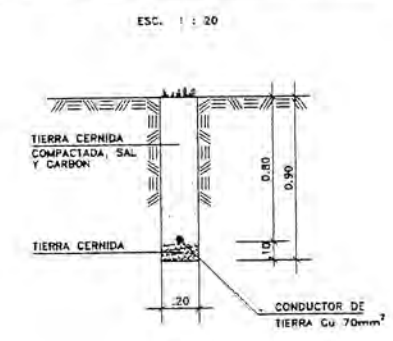


UNIVERSIDAD NACIONAL DE INGENIERIA			
FACULTAD DE INGENIERIA ELECTRICA Y ELECTRONICA			
ESTUDIO DEFINITIVO DEL SISTEMA ELECTRICO REGIONAL DE MOLLENDO			
SUBSTACION MATARANI 33/10 kV , 3.5 MVA			
FECHA:	DISEÑO:	REVISO:	LAMINA:
ENE-95	S.P.C.	C.H.M.	18
ESCALA:	DIBUJO:	APROBO:	
1:50	A.C.B.		



POSTE DE CONCRETO ARMADO 8/300

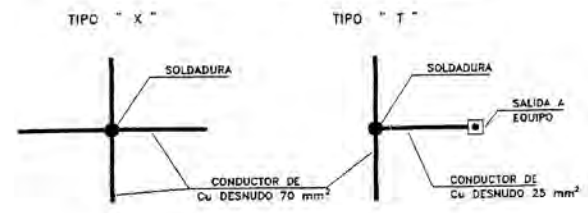
SECCION MALLA DE TIERRA



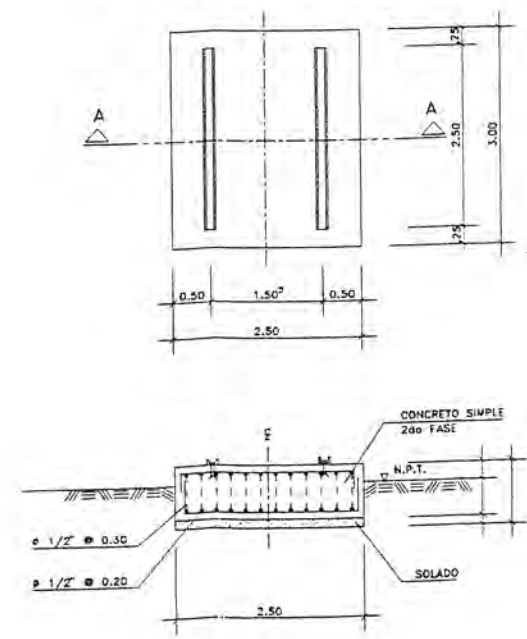
DETALLE AISLADOR TIPO CARRETE

ESC. 1 : 10

SOLDADURA ENTRE CONDUCTORES

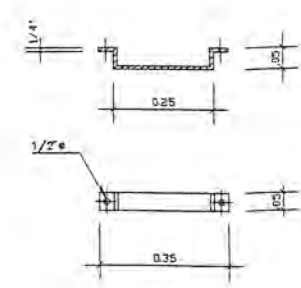


BASE DE TRANSFORMADOR

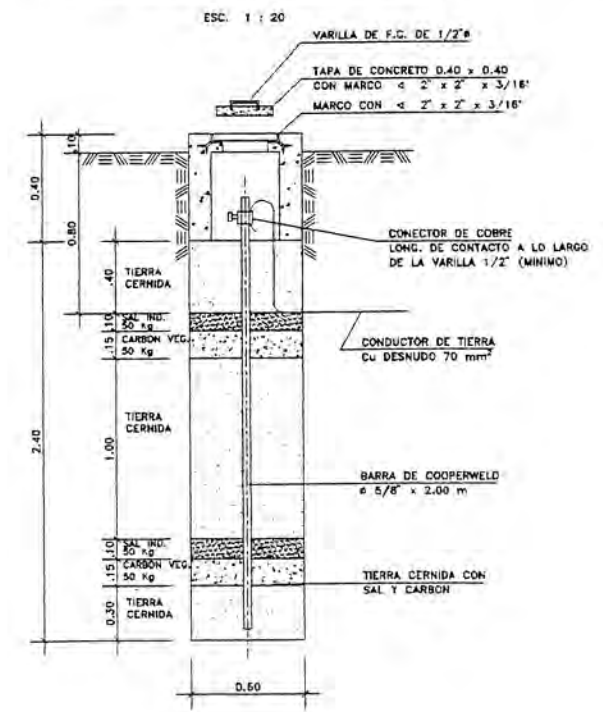


SECCION A - A

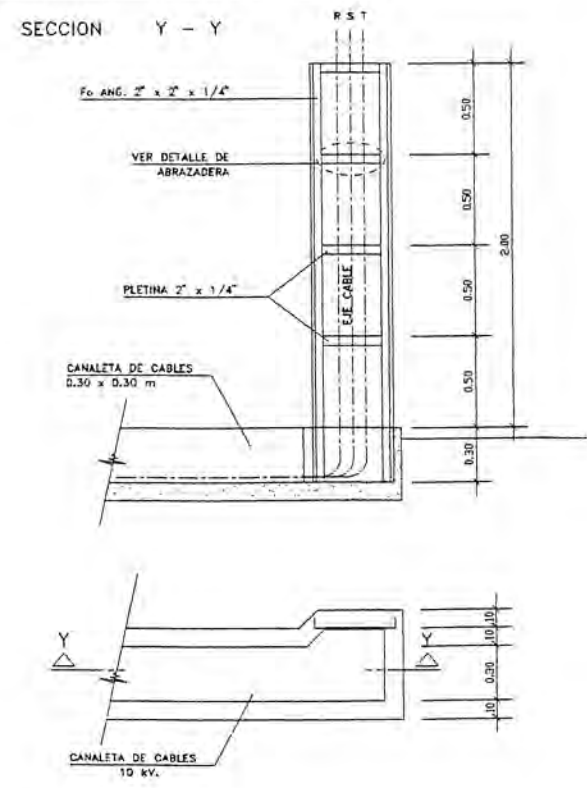
DETALLE DE ABRAZADERA



DETALLE POZO DE TIERRA



SOPORTE DE CABLES 10KV



UNIVERSIDAD NACIONAL DE INGENIERIA			
FACULTAD DE INGENIERIA ELECTRICA Y ELECTRONICA			
ESTUDIO DEFINITIVO DEL SISTEMA ELECTRICO REGIONAL DE MOLLENDO			
DETALLES GENERALES			
FECHA: ENE-95	DISEÑO: G.P.C.	REVISO: C.H.W.	LAMINA: 19
ESCALA: INDICADA	DIBUJO: A.C.B.	APROBO:	