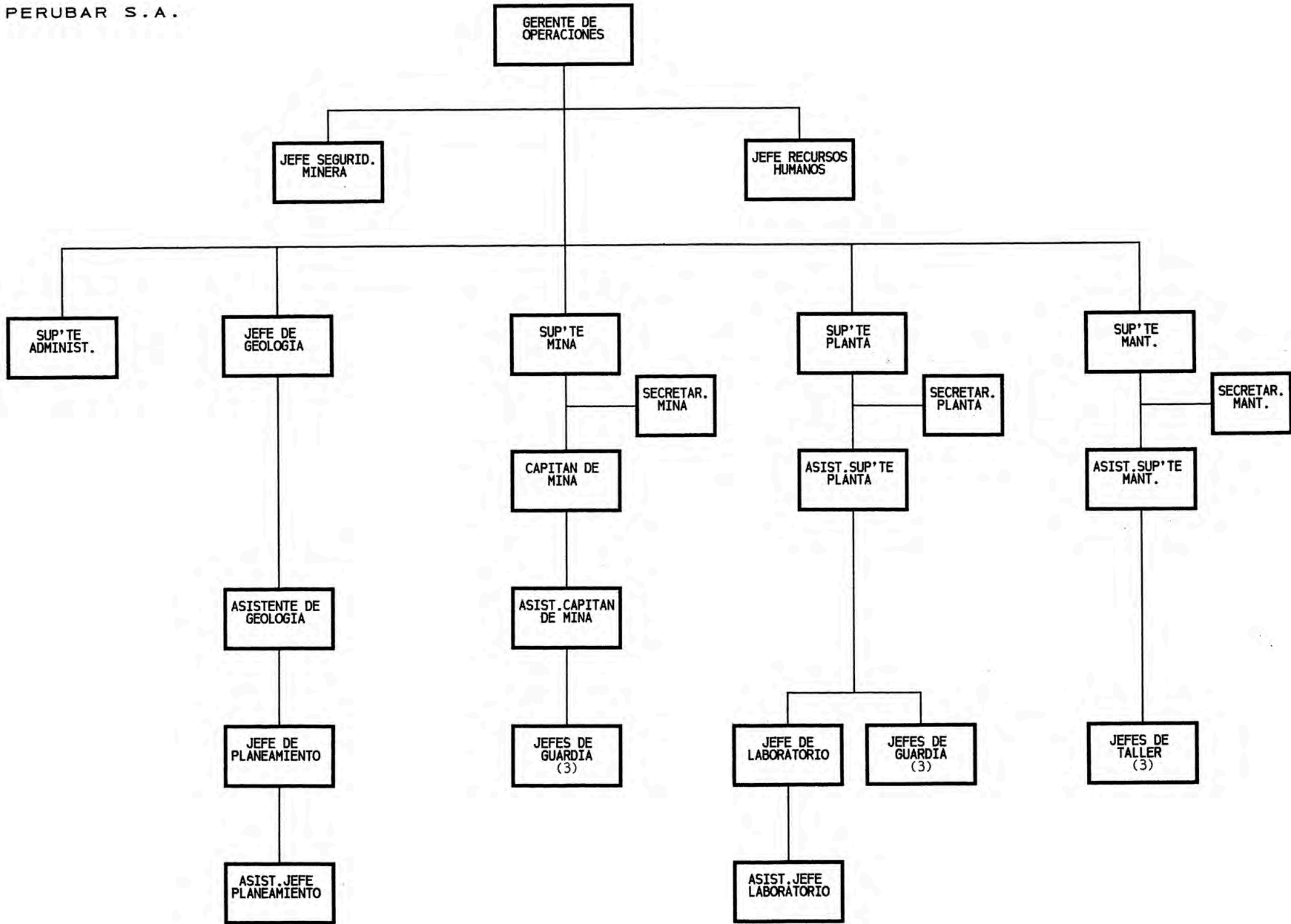


1.6. ORGANIGRAMA

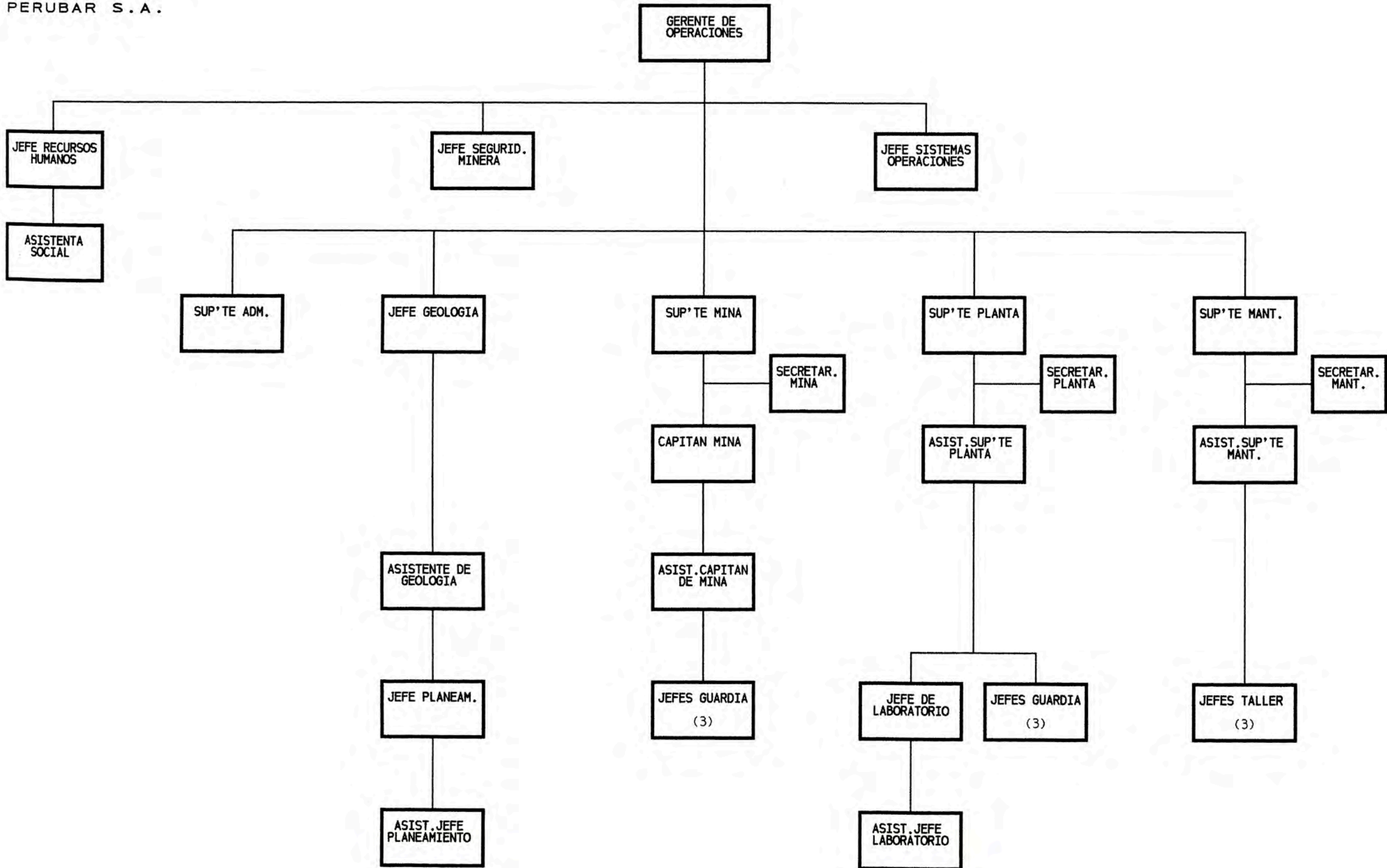
1.6.1. ORGANIGRAMA ACTUAL DEL AREA DE PRODUCCION

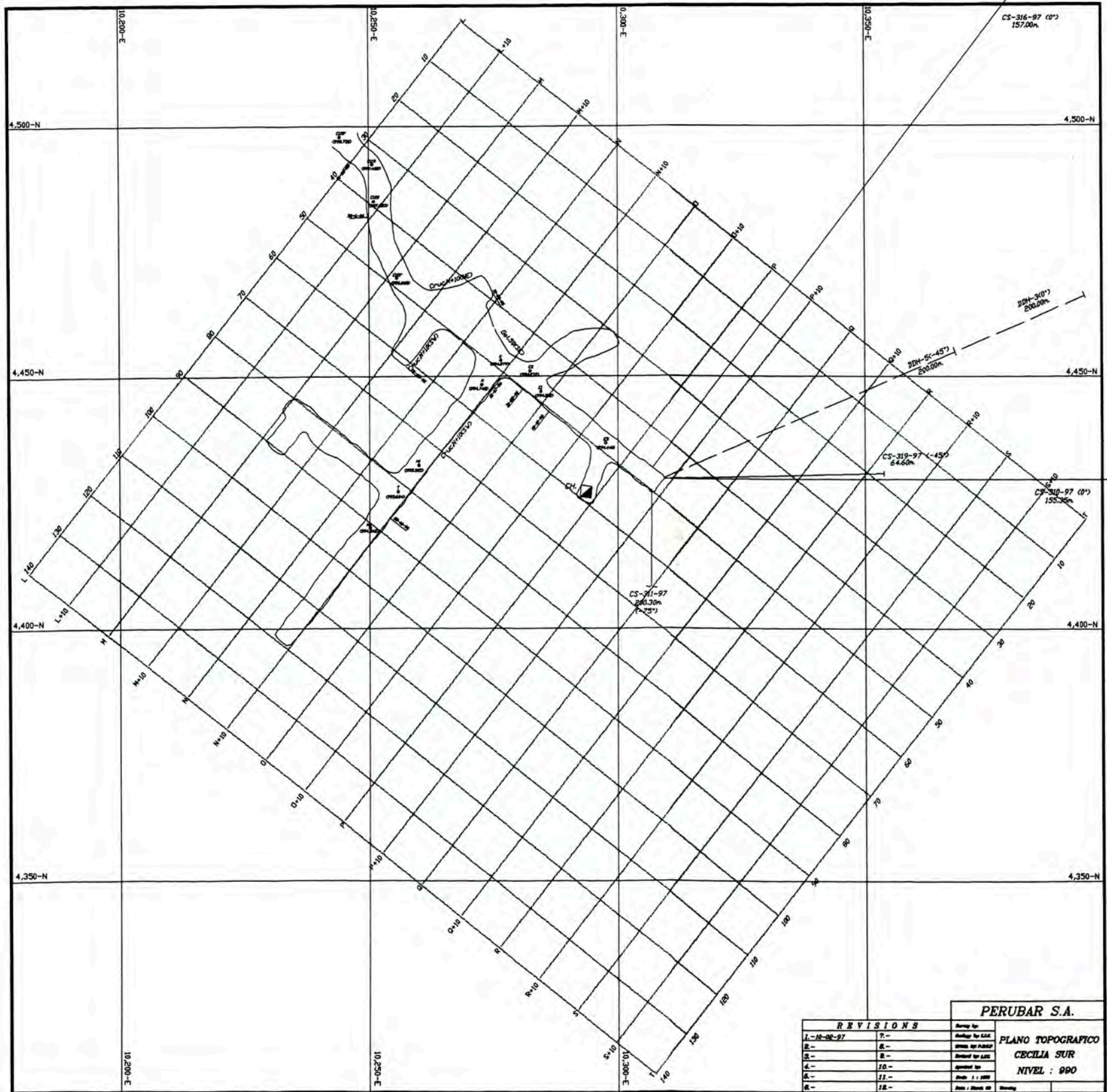
PERUBAR S.A.



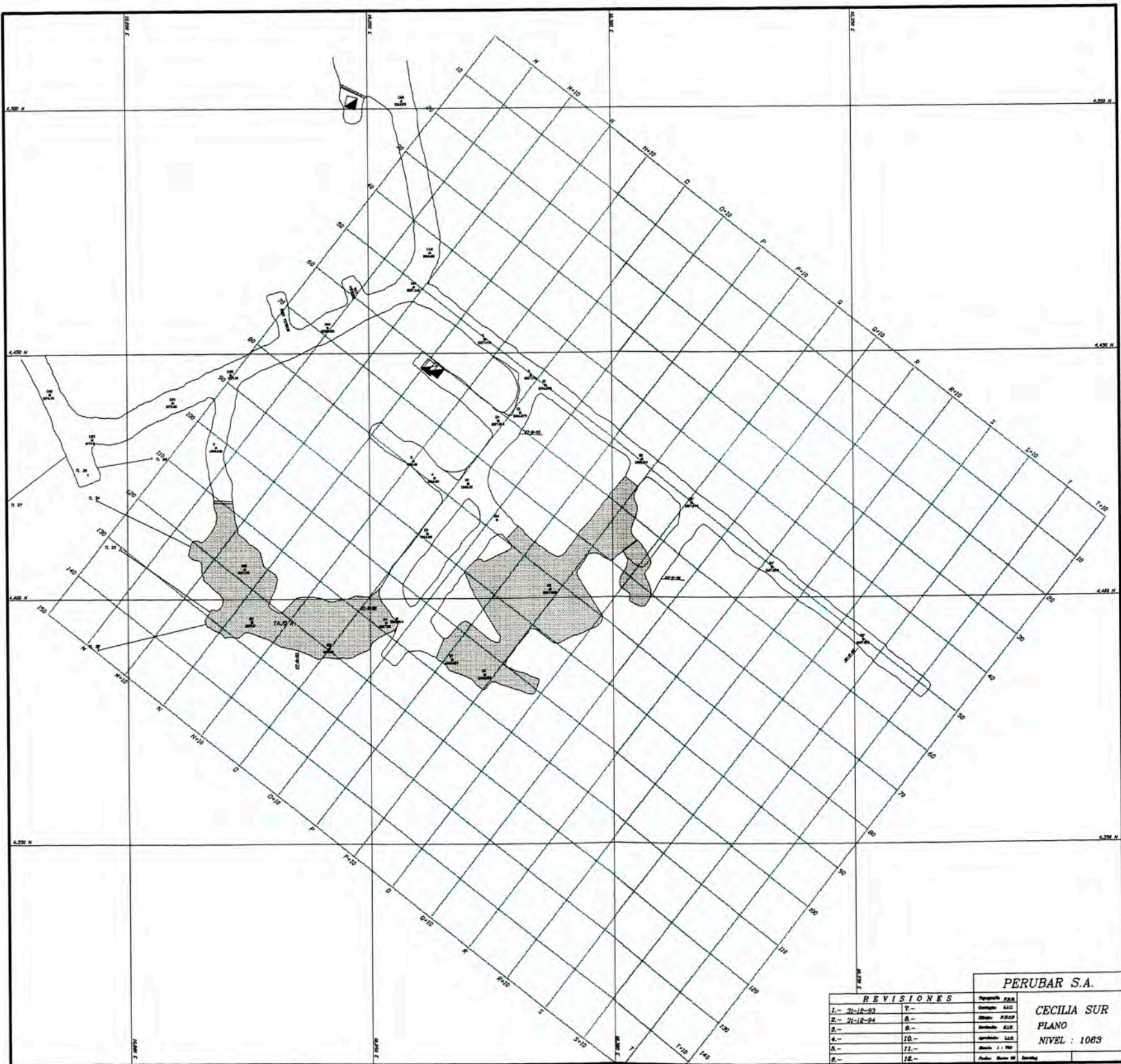
1.6.2. ORGANIGRAMA PROPUESTO.

PERUBAR S.A.





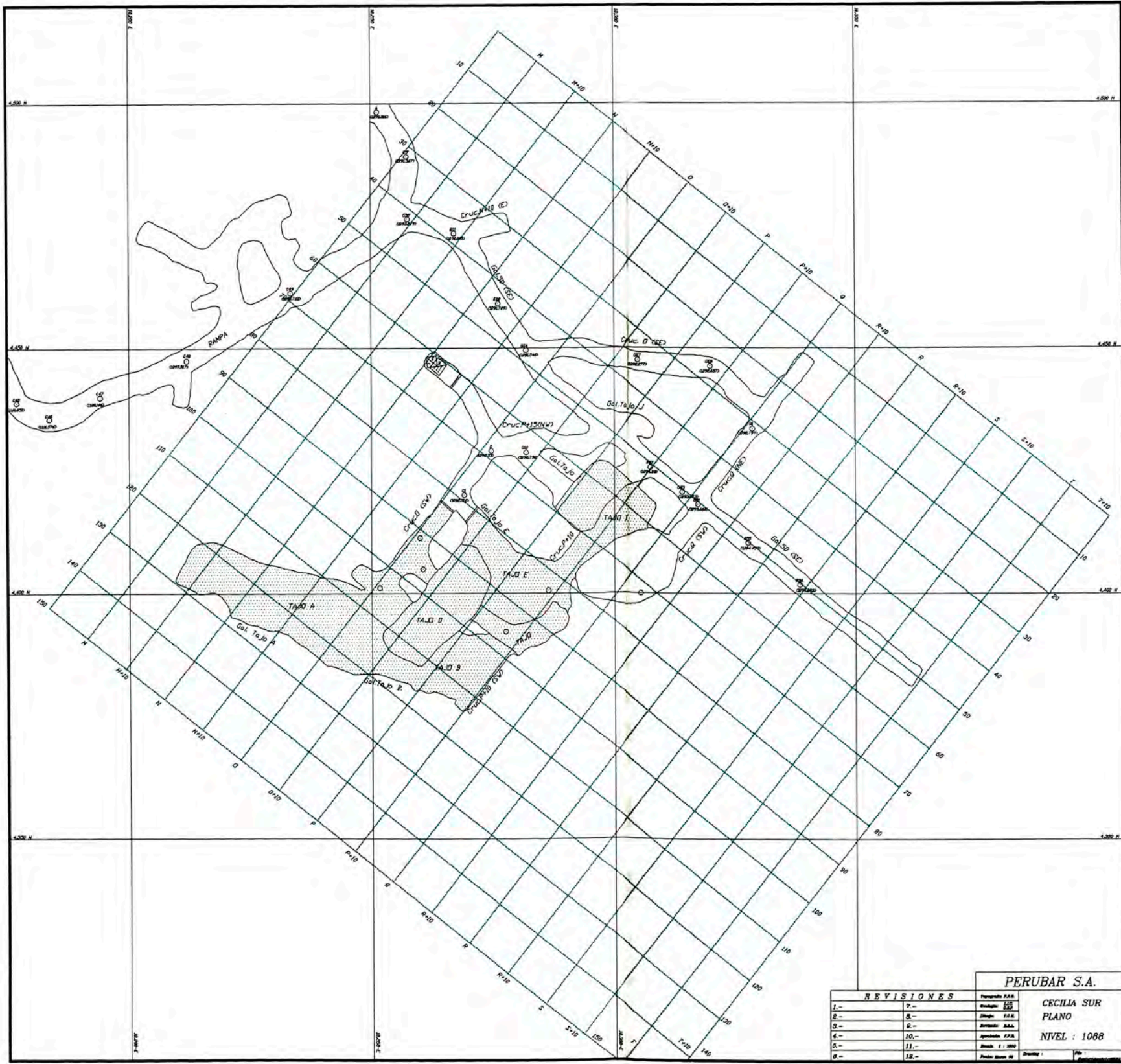
REVISIONS		PERUBAR S.A.	
1.-10-06-97	7.-	Elaborado por	PLANO TOPOGRAFICO
2.-	8.-	Revisado por	CECILIA SUR
3.-	9.-	Revisado por	NIVEL : 990
4.-	10.-	Elaborado por	
5.-	11.-	Fecha : 1.1.2000	
6.-	12.-	Auto : 10000	



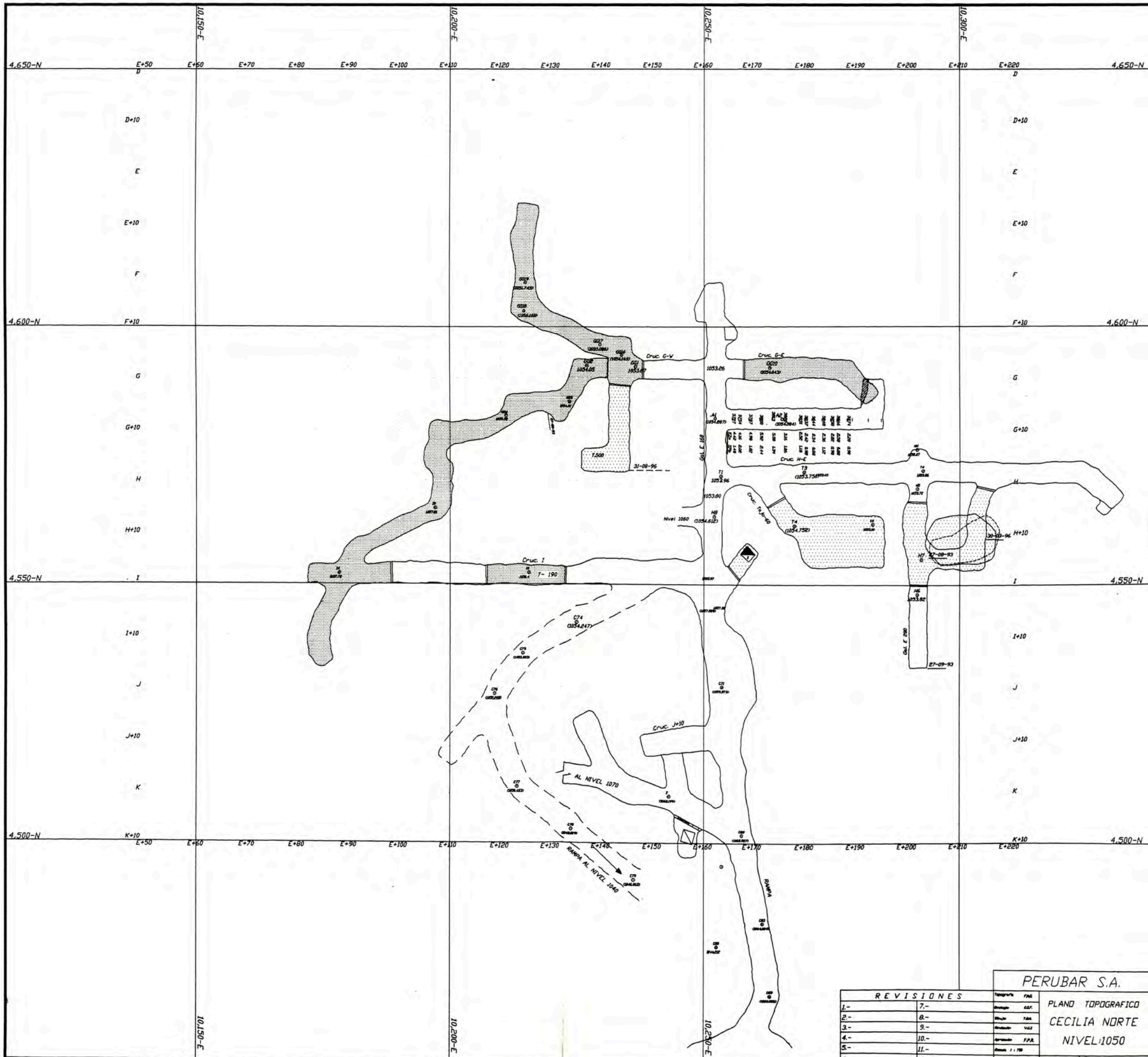
REVISIONES		Elaborado P.A.S.
1.- 21-12-92	Y.-	Diseño A.G.G.
2.- 21-12-94	B.-	Dibujo P.B.C.P.
3.-	R.-	Introducción S.A.S.
4.-	10.-	Apéndice S.A.S.
5.-	11.-	Planos 1:100
6.-	12.-	Planos 1:500

PERUBAR S.A.

CECILIA SUR
PLANO
NIVEL : 1063



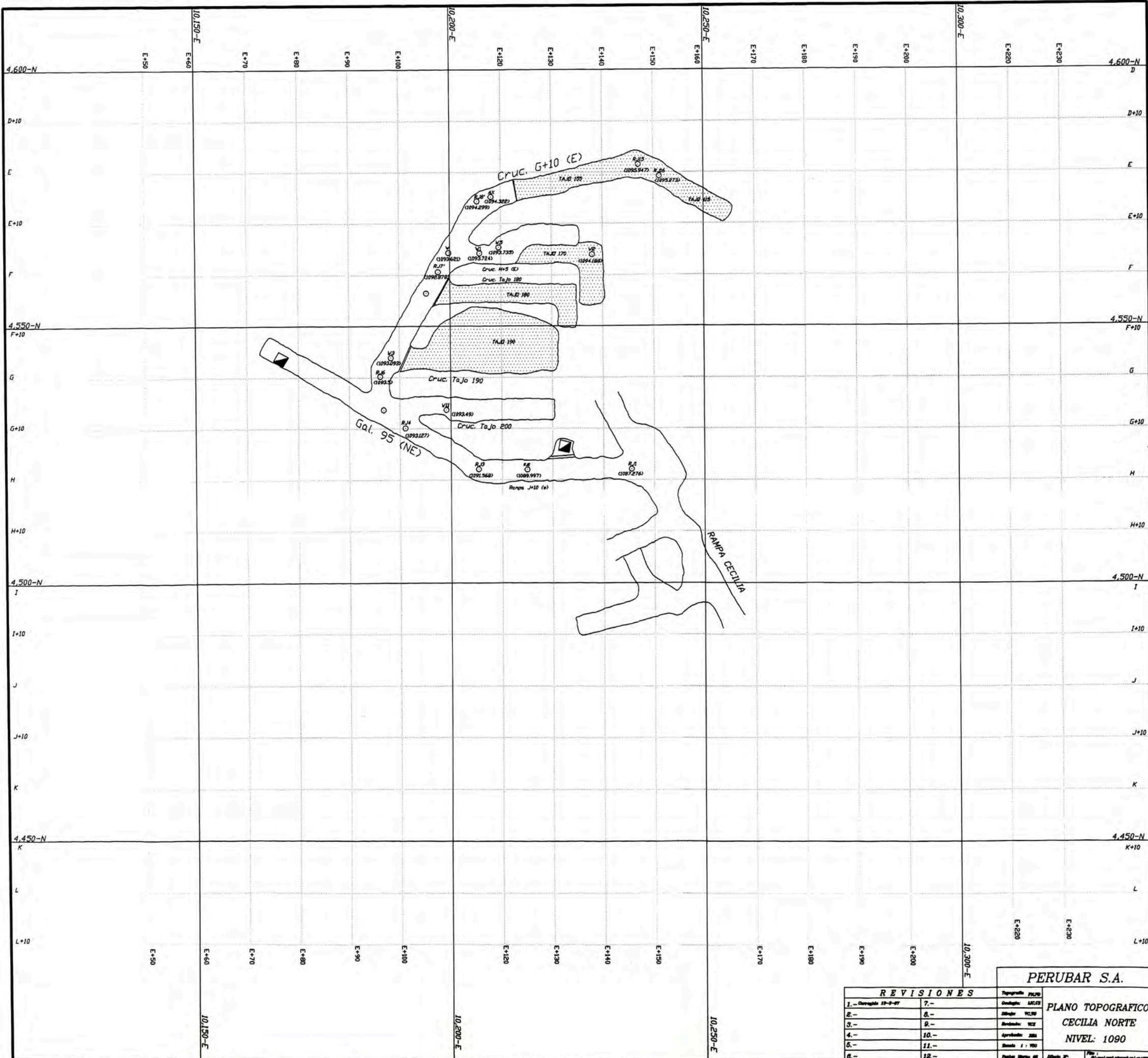
REVISIONES		PERUBAR S.A.	
1.-	7.-	Topografía E.A.A.	CECILIA SUR PLANO NIVEL : 1088
2.-	8.-	Diseño E.A.A.	
3.-	9.-	Ante-proyecto E.A.A.	
4.-	10.-	Ante-proyecto E.P.A.	
5.-	11.-	Plano 1:1000	
6.-	12.-	Plano Base 1:1000	



PERUBAR S.A.

REVISIONES		Topografía	PMG
1.-	7.-	Planteo	GRF
2.-	8.-	Medición	TAB
3.-	9.-	Procesamiento	VCC
4.-	10.-	Aplicación	F.P.A.
5.-	11.-	Escala	1:750
6.-	12.-	Fuente	Mapa

PLAND TOPOGRAFICO
 CECILIA NORTE
 NIVEL 1050



PERUBAR S.A.

REVISIONES	
1.-	Corregido 19-9-97
2.-	
3.-	
4.-	
5.-	
6.-	
7.-	
8.-	
9.-	
10.-	
11.-	
12.-	

Topografo:	PERUBAR
Diseño:	ARGENT
Dibujo:	WLSR
Revisado:	WLSR
Aprobado:	WLSR
Escala:	1 : 100
Fecha:	18/09/97
Hoja:	01
Fig.:	01

PLANO TOPOGRAFICO
CECILIA NORTE
NIVEL: 1090

MES	Nit-Am. lbs.	Dinamita 7/8*7 lbs.	Dinamita 7/8*8 lbs.	Dinamita 1 1/2*8 lbs.	Mecha de Seg. ft.	Mecha Rapida ft.	Pentacord 3P ft.	Pentacord 5P ft.	Fulmin. #6 unid.	Fulmin. #8 unid.	Fulmin. Elect. unid.	Conect. unid.	Panel unid.	Maconita tubos	Petr'leo lbs.	Total Explosiv. lbs.	Total Material Roto	Total Pies Perf.	Tn/lb. de Explos.	Tn/pie Perf.
ENERO	27,547	1,616	0	0	39,557	352	0	113	0	3,385	260	32	304	0	1,606	30,769	0	0	0.00	0.00
FEBRERO	22,748	1,320	0	0	32,433	52	0	173	0	3,150	292	18	118	44	1,327	25,439	0	0	0.00	0.00
MARZO	0	0	0	0	0	0	0	0	0	0	0	0	0	0	0	0	0	0	0.00	0.00
ABRIL	0	0	0	0	0	0	0	0	0	0	0	0	0	0	0	0	0	0	0.00	0.00
MAYO	0	0	0	0	0	0	0	0	0	0	0	0	0	0	0	0	0	0	0.00	0.00
JUNIO	0	0	0	0	0	0	0	0	0	0	0	0	0	0	0	0	0	0	0.00	0.00
JULIO	0	0	0	0	0	0	0	0	0	0	0	0	0	0	0	0	0	0	0.00	0.00
AGOSTO	0	0	0	0	0	0	0	0	0	0	0	0	0	0	0	0	0	0	0.00	0.00
SEPTIEMBRE	0	0	0	0	0	0	0	0	0	0	0	0	0	0	0	0	0	0	0.00	0.00
OCTUBRE	0	0	0	0	0	0	0	0	0	0	0	0	0	0	0	0	0	0	0.00	0.00
NOVIEMBRE	0	0	0	0	0	0	0	0	0	0	0	0	0	0	0	0	0	0	0.00	0.00
DICIEMBRE	0	0	0	0	0	0	0	0	0	0	0	0	0	0	0	0	0	0	0.00	0.00
TOTAL	50,295	2,936	0	0	71,990	404	0	286	0	6,535	552	50	422	44	2,933	56,208	0	0	0.00	0.00

Nro	FECHA	GUARDIA LABOR /VOLAD.	PILA VOLADURA EN :	DISPARO	DIN 7/8*7 Cart.	DIN 7/8*8 Cart.	BOOSTER unid.	ANFO Lb.	R.B.M. unid.	PENT 5P pies.	FULM ELEC unid.	PANEL unid.	EMULER unid.	EXSACORTE tubos	FULM #6 unid.	FULM #8 unid.	CONECTORES unid.	GUIA SEG pies.	MECHA RAP pies.	OBSERVACIONES
1	02/02/98	1A	S-1015	CONVENCIONAL	114	0	0	935	0	39	0	40	0	0	0	8	8	0	14	
2	02/02/98	1B	S-1085	CONVENCIONAL	252	0	0	220	0	0	0	0	0	0	0	90	0	877	0	
3	03/02/98	1A	N-1070	ELECTRICO	118	0	0	1,232	0	0	47	0	0	0	0	0	0	0	0	
4	03/02/98	1B	S-0990	CONVENCIONAL	328	0	0	1,210	0	0	0	0	0	0	0	228	0	2,691	0	
5	04/02/98	1A	S-1015	CONVENCIONAL	47	0	0	330	0	45	0	19	0	0	0	4	4	0	21	
6	06/02/98	1A	N-1070	ELECTRICO	134	0	0	1,430	0	0	64	0	0	0	0	0	0	0	0	
7	06/02/98	1B	N-1000	CONVENCIONAL	402	0	0	392	0	0	0	0	153	0	0	0	0	1,700	0	
8	06/02/98	2A	S-0965	CONVENCIONAL	615	0	0	1,991	0	0	0	0	0	0	0	371	0	4,686	0	
9	09/02/98	1A	N-1090	CONVENCIONAL	110	0	0	990	0	55	0	44	0	0	0	6	6	18	17	
10	10/02/98	1A	S-1000	CONVENCIONAL	304	0	0	561	0	0	0	0	0	0	0	164	0	1,455	0	
11	12/02/98	1A	S-1088	CONVENCIONAL	298	0	0	1,067	0	0	0	0	0	0	0	299	0	2,624	0	
12	12/02/98	1B	S-1050	ELECTRICO	70	0	0	990	0	0	35	0	0	0	0	0	0	0	0	
13	13/02/98	1A	S-1000	CONVENCIONAL	472	0	0	1,155	0	0	0	0	0	0	0	263	0	2,651	0	
14	14/02/98	1A	N-1070	ELECTRICO	315	0	0	3,190	0	0	146	0	0	0	0	0	0	0	0	
15	15/02/98	1A	N-0975	CONVENCIONAL	320	0	0	880	0	11	0	0	0	0	0	145	0	1,455	0	
16	17/02/98	1A	N-1070	CONVENCIONAL	604	0	0	1,210	0	23	0	0	0	0	0	229	0	1,914	0	
17	20/02/98	1A	S-1060	CONVENCIONAL	385	0	0	517	0	0	0	0	0	0	0	175	0	1,787	0	
18	20/02/98	1B	S-1088	CONVENCIONAL	775	0	0	1,364	0	0	0	0	0	0	0	248	0	2,253	0	
19	23/02/98	1A	S-1088	CONVENCIONAL	674	0	0	1,375	0	0	0	0	0	0	0	348	0	3,738	0	
20	26/02/98	1A	S-1000	CONVENCIONAL	694	0	0	1,474	0	0	0	15	0	0	0	285	0	2,332	0	
21	28/02/98	1A	S-0990	CONVENCIONAL	660	0	0	1,562	0	0	0	0	0	0	0	287	0	2,252	0	
T O T A L :					7,691	0	0	24,075	0	173	292	118	153	0	0	3,150	18	32,433	52	

MINA GRACIELA .
SUMARIO DE EXPLOSIVOS Y ACCESORIOS USADOS Y MATERIAL ROTO EN 1998

MONTH	Nit-Am. lbs.	Dinamita 7/8*7 lbs.	Dinamita 7/8*8 lbs.	Dinamita 1 1/2*8 lbs.	Dinamita 2*8 lbs.	Mecha de Seg. Pies	Mecha R pida Pies	Pentacord 3P Pies	Pentacord 5P Pies	Fulm. #6 unid.	Fulm. #8 unid.	Fulm. Elect. unid.	Micro Ret M.S. unid.	Conect. unid.	Fanel unid.	Maconita tubos	Petr Leo lbs.	Total Explosiv. lbs.	Total Material Roto	Total Pies Perf.	Tn/lb. de Explosiv	Tn/pie Perf.
ENERO	1,873	103	0	0	0	4,904	54	0	223	2	62	38	0	18	37	0	109	2,085	0	0	0.00	0.00
FEBRERO	1,071	74	0	0	0	633	5	0	10	0	69	41	0	2	10	0	62	1,207	0	0	0.00	0.00
MARZO	0	0	0	0	0	0	0	0	0	0	0	0	0	0	0	0	0	0	0	0	0.00	0.00
ABRIL	0	0	0	0	0	0	0	0	0	0	0	0	0	0	0	0	0	0	0	0	0.00	0.00
MAYO	0	0	0	0	0	0	0	0	0	0	0	0	0	0	0	0	0	0	0	0	0.00	0.00
JUNIO	0	0	0	0	0	0	0	0	0	0	0	0	0	0	0	0	0	0	0	0	0.00	0.00
JULIO	0	0	0	0	0	0	0	0	0	0	0	0	0	0	0	0	0	0	0	0	0.00	0.00
AGOSTO	0	0	0	0	0	0	0	0	0	0	0	0	0	0	0	0	0	0	0	0	0.00	0.00
SEPTIEMBRE	0	0	0	0	0	0	0	0	0	0	0	0	0	0	0	0	0	0	0	0	0.00	0.00
OCTUBRE	0	0	0	0	0	0	0	0	0	0	0	0	0	0	0	0	0	0	0	0	0.00	0.00
NOVIEMBRE	0	0	0	0	0	0	0	0	0	0	0	0	0	0	0	0	0	0	0	0	0.00	0.00
DICIEMBRE	0	0	0	0	0	0	0	0	0	0	0	0	0	0	0	0	0	0	0	0	0.00	0.00
TOTAL	2,943	177	0	0	0	5,537	59	0	233	2	131	79	0	20	47	0	172	3,292	0	0	0.00	0.00

PERUBAR S.A.

MINA JUANITA .

SUMARIO DE EXPLOSIVOS Y ACCESORIOS USADOS Y MATERIAL ROTO EN 1998

PAG: 1

04/01/98

MES	Nit-Am. lbs.	Dinamita 7/8*7 lbs.	Dinamita 7/8*8 lbs.	Booster unid.	Mecha de Seg. ft.	Mecha Rapida ft.	R.B.M. unid.	Pentacord 5P ft.	Fulmin. #6 unid.	Fulmin. #8 unid.	Fulmin. Elect. unid.	Conect. unid.	Panel unid.	Emuler unid.	Petr Teo lbs.	Total Explosiv. lbs.	Total Material Roto	Total Pies Perf.	Tn/lb. de Explos.	Tn/pie Perf.
ENERO	2,359	295	0	0	5,149	10	0	0	0	463	45	8	35	0	138	2,792	0	0	0.00	0.00
FEBRERO	520	282	0	0	1,629	3	0	5	0	226	30	416	10	0	30	832	0	0	0.00	0.00
MARZO	0	0	0	0	0	0	0	0	0	0	0	0	0	0	0	0	0	0	0.00	0.00
ABRIL	0	0	0	0	0	0	0	0	0	0	0	0	0	0	0	0	0	0	0.00	0.00
MAYO	0	0	0	0	0	0	0	0	0	0	0	0	0	0	0	0	0	0	0.00	0.00
JUNIO	0	0	0	0	0	0	0	0	0	0	0	0	0	0	0	0	0	0	0.00	0.00
JULIO	0	0	0	0	0	0	0	0	0	0	0	0	0	0	0	0	0	0	0.00	0.00
AGOSTO	0	0	0	0	0	0	0	0	0	0	0	0	0	0	0	0	0	0	0.00	0.00
SEPTIEMBRE	0	0	0	0	0	0	0	0	0	0	0	0	0	0	0	0	0	0	0.00	0.00
OCTUBRE	0	0	0	0	0	0	0	0	0	0	0	0	0	0	0	0	0	0	0.00	0.00
NOVIEMBRE	0	0	0	0	0	0	0	0	0	0	0	0	0	0	0	0	0	0	0.00	0.00
DICIEMBRE	0	0	0	0	0	0	0	0	0	0	0	0	0	0	0	0	0	0	0.00	0.00
TOTAL	2,879	577	0	0	6,778	13	0	5	0	689	75	424	45	0	168	3,624	0	0	0.00	0.00

PERUBAR S.A.
PLANTA CONCENTRADORA

Tratamiento de mineral de CECILIA/GRACIELA
Resultados Metalurgicos del 31/03/98

		TONELAJES		LEYES			% DISTRIBUCION			
		T.M.S.	% Wt	% Pb	% Zn	% Fe	Pb	Zn	Fe	Rad.Conc
Guardia A J.R.	Cabeza	521.41	100.00	1.24	5.46	7.70	100.00	100.00	100.00	
	Conc.Pb	6.58	1.26	71.74	7.04	2.37	73.01	1.63	0.39	79.24
	Conc.Zn	47.33	9.08	2.60	54.04	6.76	19.03	89.83	7.94	11.02
	Relaves	467.50	89.66	0.11	0.52	7.90	7.95	8.54	91.67	
Guardia B P.T.	Cabeza	527.30	100.00	1.24	4.99	7.68	100.00	100.00	100.00	
	Conc.Pb	6.54	1.24	73.78	5.44	2.86	73.83	1.35	0.46	80.63
	Conc.Zn	43.77	8.30	2.71	53.85	6.95	18.14	89.58	7.49	12.05
	Relaves	476.99	90.46	0.11	0.50	7.84	8.02	9.06	92.05	
Guardia C L.B.	Cabeza	527.17	100.00	1.32	4.68	7.27	100.00	100.00	100.00	
	Conc.Pb	6.75	1.28	76.49	4.36	2.05	74.20	1.19	0.38	78.10
	Conc.Zn	40.10	7.61	3.16	54.44	6.80	18.21	88.49	7.45	13.15
	Relaves	480.32	91.11	0.11	0.53	7.02	7.59	10.32	92.17	
ACUMULADO D I A	Cabeza	1,575.88	100.00	1.27	5.04	7.55	100.00	100.00	100.00	
	Conc.Pb	19.87	1.26	74.03	5.60	2.42	73.69	1.40	0.41	79.31
	Conc.Zn	131.20	8.33	2.81	54.10	6.84	18.45	89.33	7.63	12.01
	Relaves	1,424.81	90.41	0.11	0.52	7.58	7.85	9.27	91.96	
ACUMULADO MENSUAL	Cabeza	45,527.79	100.00	1.33	5.39	7.24	100.00	100.00	100.00	
	Conc.Pb	578.62	1.27	74.41	5.32	2.13	70.88	1.25	0.38	78.68
	Conc.Zn	4,032.53	8.86	2.81	54.08	6.84	18.67	88.89	8.60	11.29
	Relaves	40,916.64	89.87	0.16	0.59	7.14	10.45	9.86	91.02	
ACUMULADO ANUAL	Cabeza	128,748.01	100.00	1.19	5.79	7.15	100.00	100.00	100.00	
	Conc.Pb	1,450.34	1.13	73.23	5.92	2.32	69.23	1.15	0.37	88.77
	Conc.Zn	12,403.04	9.63	2.53	53.97	7.12	20.44	89.79	9.81	10.38
	Relaves	114,894.63	89.24	0.14	0.59	7.04	10.34	9.06	89.82	

Consumo de Reactivos en Flotacion de Pb (Kgs/TMS)								
	ZnSO4	NaCN	Z-11	Z-6	F-521	AP407	ER350	Z-14
Guardia A	0.055	0.019	0.010	0.000	0.010	0.000	0.000	0.000
Guardia B	0.064	0.019	0.010	0.000	0.011	0.000	0.000	0.000
Guardia C	0.052	0.018	0.010	0.000	0.011	0.000	0.000	0.000
Acum. Dia	0.057	0.019	0.010	0.000	0.011	0.000	0.000	0.000
Acum. Mes	0.048	0.015	0.012	0.000	0.009	0.000	0.000	0.000
Acum. Ano	0.058	0.019	0.010	0.000	0.013	0.000	0.000	0.000

Consumo de Reactivos en Flotacion de Zn (Kgs/TMS)									
	CUSO4	Z-11	Z-6	Z-14	F-521	ER350	P7807	F-523	CAL
Guardia A	0.206	0.029	0.000	0.025	0.009	0.000	0.000	0.000	0.000
Guardia B	0.175	0.025	0.000	0.023	0.009	0.000	0.000	0.000	0.000
Guardia C	0.178	0.028	0.000	0.023	0.005	0.000	0.000	0.000	0.000
Acum. Dia	0.186	0.027	0.000	0.024	0.008	0.000	0.000	0.000	0.000
Acum. Mes	0.182	0.035	0.000	0.029	0.012	0.000	0.000	0.000	0.000
Acum. Ano	0.190	0.031	0.000	0.028	0.013	0.000	0.000	0.000	0.000

Consumo de Reactivos en Flotacion de Fe (Kgs/TMS)							
	ZnSO4	A-242	Z-11	Z-6	A-31	F-210	F-521
Guardia A	0.000	0.000	0.000	0.000	0.000	0.000	0.000
Guardia B	0.000	0.000	0.000	0.000	0.000	0.000	0.000
Guardia C	0.000	0.000	0.000	0.000	0.000	0.000	0.000
Acum. Dia	0.000	0.000	0.000	0.000	0.000	0.000	0.000
Acum. Mes	0.000	0.000	0.000	0.000	0.000	0.000	0.000
Acum. Ano	0.000	0.000	0.000	0.000	0.000	0.000	0.000

	TMS/Hr.Op.		TMS/Hr.Op.
Guardia A :	65.18	Acum. Dia :	65.66
Guardia B :	65.91	Acum. Mes :	63.90
Guardia C :	65.90	Acum. Ano :	61.82

Despacho de Concentrado de Zn al Callao						
	TMH	% Hum	TMS	% Pb	% Zn	% Fe
DIA	280.310	9.39	254.002		53.94	6.95
MES	4,516.190	8.49	4,132.550		54.03	6.99
Ano	13,439.010	8.22	12,334.868		53.85	7.16

Despacho de Concentrado de Pb al Callao						
	TMH	% Hum	TMS	% Pb	% Zn	% Fe
DIA	128.590	6.31	120.476	74.47		
MES	630.780	5.94	593.332	73.87		
Ano	1,542.810	5.43	1,459.044	72.94		

Despacho de Concentrado de Zn a Cajamarquilla						
	TMH	% Hum	TMS	% Pb	% Zn	% Fe
DIA	0.000	0.00	0.000		0.00	0.00
MES	0.000	0.00	0.000		0.00	0.00
Ano	0.000	0.00	0.000		0.00	0.00

CHANCADORAS - MOLINOS									
	Horas Operadas			Consumo Barras/Bolas (Kgs)			Kgs/TMS Trat.		
	Dia	Mes	Ano	Dia	Mes	Ano	Dia	Mes	Ano
Chanc.1ria	13.50	340.33	995.33						
Chanc.2ria	16.00	467.83	1349.41						
Chanc.3ria	16.00	467.83	1346.16						
Mol.7'x12'	24.00	712.49	2082.66	0	4,844	20,587	0.000	0.106	0.160
Mol.5'x10'	24.00	714.16	2087.65	0	3,000	8,300	0.000	0.066	0.064
Mol.6'x6'	24.00	708.91	2074.82	0	3,200	9,850	0.000	0.070	0.077

ANALISIS DE MALLAS - CABEZA					
MALLA	Gdia.A	Gdia.B	Gdia.C	Ac.Dia	Ac.Mes
+ 50	8.62	8.05	8.09	8.25	9.27
+100	11.95	11.69	12.03	11.89	11.91
+200	26.29	26.25	26.30	26.28	23.10
+325	15.31	15.81	15.58	15.57	14.30
-325	37.83	38.20	38.00	38.01	41.40

ANALISIS DE MALLAS - RELAVES					
MALLA	Gdia.A	Gdia.B	Gdia.C	Ac.Dia	Ac.Mes
-325	45.91	45.60	45.70	45.74	46.78

STOCK DE CONCENTRADOS		
FECHA	T.M.S. Zn	T.M.S. Pb
Mes Ant.	170.000	6.000
30/03/98	215.000	112.000
31/03/98	90.000	0.000

OBSERVACIONES : Parada de Planta : 0.00 hrs.
* Se cambio manguera hidraulica del rompedor KENT.
* Se esta modificando la instalacion de tuberia de relaves del Pit Graciela.

Ing. G. Meza, L.

ERUBAR S.A.
LANTA CONCENTRADORA GRACIELARECORD METALURGICO POR GUARDIA. Jefe de Guardia: R.CANO
Tratamiento de mineral de CECILIA/GRACIELA. Marzo-98PAG: 1
01/04/98

FECHA	Guard.	CABEZA T.M.S.	HORAS OPERADAS	TMS/HORA	C A B E Z A			CONCENTRADO DE PLOMO			CONCENTRADO DE ZINC			RELAVES		MALLAS (Cabeza)			REACTIVOS (Kg/TMS)					
					% Pb	% Zn	% Fe	% Pb	% Zn	Rec %	% Pb	% Zn	Rec %	%Pb	%Zn	-100 #	-200 #	-325 #	CUSO4	Z-11	Z-6	Z-14	F-521	Cal
01/03/98	B	514.70	8.00	64.34	1.08	5.26	6.15	72.31	6.53	62.81	2.94	53.45	88.88	0.16	0.58	78.24	54.68	44.50	0.170	0.040	0.000	0.021	0.010	0.000
02/03/98	A	511.49	8.00	63.94	0.95	5.47	6.35	71.40	6.73	64.74	2.15	54.44	88.21	0.16	0.65	73.19	51.31	42.16	0.177	0.049	0.000	0.023	0.010	0.000
07/03/98	A	496.51	8.00	62.06	1.38	4.94	7.22	74.57	5.27	70.09	2.81	54.24	82.93	0.22	0.85	75.16	52.03	37.40	0.182	0.040	0.000	0.025	0.014	0.000
08/03/98	A	505.40	7.92	63.81	1.45	5.26	7.27	64.40	10.39	67.46	3.73	52.06	87.11	0.16	0.58	78.40	56.40	44.18	0.184	0.047	0.000	0.024	0.018	0.000
09/03/98	B	498.38	7.83	63.65	1.50	5.39	7.30	72.99	5.74	80.00	2.27	54.59	89.95	0.11	0.50	81.52	57.04	41.81	0.174	0.040	0.000	0.036	0.019	0.000
10/03/98	A	501.28	8.00	62.66	1.05	5.72	6.75	75.02	5.42	60.51	2.91	54.19	88.20	0.16	0.70	77.94	54.17	40.11	0.183	0.047	0.000	0.037	0.018	0.000
11/03/98	A	496.02	8.00	62.00	1.40	5.50	6.98	74.34	6.56	73.08	2.74	53.45	89.25	0.14	0.56	78.46	56.45	42.59	0.196	0.045	0.000	0.039	0.022	0.000
14/03/98	A	502.03	8.00	62.75	1.23	5.30	6.95	71.63	5.81	72.31	2.17	54.69	89.12	0.17	0.56	82.06	61.69	48.28	0.209	0.046	0.000	0.042	0.011	0.000
15/03/98	A	492.69	8.00	61.59	1.60	6.47	6.35	74.23	6.43	74.51	2.82	53.55	91.52	0.11	0.51	79.25	61.39	45.55	0.205	0.045	0.000	0.041	0.014	0.000
16/03/98	A	497.61	8.00	62.20	1.37	5.91	7.97	75.24	4.91	71.85	2.29	53.25	88.84	0.18	0.67	74.07	56.34	41.51	0.222	0.033	0.000	0.025	0.011	0.000
17/03/98	A	505.52	8.00	63.19	1.38	5.23	6.80	73.44	5.76	78.46	2.18	54.04	89.79	0.12	0.50	80.77	67.08	48.48	0.191	0.032	0.000	0.025	0.009	0.000
19/03/98	B	512.39	8.00	64.05	1.48	5.28	7.34	75.36	4.32	81.52	1.87	55.38	87.78	0.13	0.64	83.71	59.19	43.68	0.199	0.034	0.000	0.022	0.013	0.000
20/03/98	C	521.89	8.00	65.24	1.20	5.38	7.52	75.92	4.48	67.84	3.04	54.79	90.07	0.13	0.54	79.94	54.75	39.62	0.174	0.029	0.000	0.023	0.012	0.000
23/03/98	A	516.05	8.00	64.51	1.16	5.45	6.99	79.98	2.78	70.93	2.24	54.54	90.40	0.15	0.55	78.27	54.11	39.90	0.178	0.032	0.000	0.022	0.010	0.000
24/03/98	A	512.59	8.00	64.07	1.30	5.08	5.48	76.82	4.39	60.99	4.40	52.86	90.04	0.14	0.51	83.48	56.49	41.22	0.155	0.027	0.000	0.029	0.010	0.000
27/03/98	B	528.15	8.00	66.02	1.50	5.41	5.40	75.58	4.94	72.46	3.13	54.64	89.90	0.15	0.53	81.38	55.59	40.26	0.196	0.023	0.000	0.030	0.010	0.000
28/03/98	B	516.06	7.83	65.91	1.47	5.47	7.38	74.11	5.64	77.39	2.59	54.34	89.75	0.11	0.53	82.85	55.79	40.19	0.165	0.022	0.000	0.030	0.022	0.000
29/03/98	C	517.30	8.00	64.66	1.24	4.93	5.46	74.00	5.47	75.55	2.39	53.85	88.86	0.12	0.53	80.98	56.32	41.31	0.172	0.022	0.000	0.029	0.011	0.000
30/03/98	B	522.30	7.92	65.95	1.32	5.50	7.48	74.57	5.67	72.71	2.68	54.34	89.87	0.13	0.54	81.29	55.78	39.45	0.188	0.021	0.000	0.030	0.012	0.000
T O T A L		9,668.36	151.50	63.82	1.32	5.42	6.79	73.88	5.70	71.83	2.70	54.03	89.03	0.14	0.58	79.55	56.65	42.21	0.185	0.035	0.000	0.029	0.013	0.000

FECHA	CABEZA T.M.S.	HORAS OPERADAS	TMS/HORA	C A B E Z A			CONCENTRADO DE PLOMO			CONCENTRADO DE ZINC			RELAVES		MALLAS (Cabeza)			REACTIVOS (Kg/TMS)					
				% Pb	% Zn	% Fe	% Pb	% Zn	Rec %	% Pb	% Zn	Rec %	%Pb	%Zn	-100 #	-200 #	-325 #	CUSO4	Z-11	Z-6	Z-14	F-521	Cal
01/03/98	1,557.32	24.00	64.89	0.99	5.22	6.49	71.89	6.79	64.03	2.49	54.00	88.09	0.16	0.62	77.54	53.94	42.63	0.165	0.041	0.000	0.022	0.011	0.000
02/03/98	1,551.62	23.92	64.87	1.08	5.14	6.60	72.95	5.96	70.21	2.24	54.74	88.81	0.15	0.57	75.37	52.07	40.19	0.176	0.047	0.000	0.024	0.010	0.000
03/03/98	1,538.84	24.00	64.12	1.13	4.70	7.31	77.63	4.16	67.16	3.21	54.61	88.90	0.14	0.53	75.89	52.72	40.50	0.163	0.039	0.000	0.022	0.008	0.000
04/03/98	764.75	13.75	55.62	1.14	4.67	7.03	74.88	4.91	65.76	3.65	53.95	87.41	0.12	0.59	75.65	51.30	37.95	0.149	0.052	0.000	0.025	0.008	0.000
05/03/98	1,548.82	24.00	64.53	1.20	4.74	7.97	76.60	3.94	71.77	2.72	54.64	85.54	0.15	0.70	79.40	53.70	40.33	0.141	0.036	0.000	0.023	0.008	0.000
06/03/98	1,530.11	23.92	63.97	1.34	5.05	7.21	74.41	4.89	68.79	3.15	53.78	85.82	0.18	0.72	77.28	52.17	37.96	0.175	0.036	0.000	0.025	0.011	0.000
07/03/98	1,519.54	23.92	63.53	1.40	5.48	7.50	73.39	6.09	70.36	2.94	54.11	85.08	0.18	0.82	77.47	55.13	41.06	0.175	0.040	0.000	0.024	0.015	0.000
08/03/98	1,507.15	23.92	63.01	1.35	5.13	8.39	70.29	6.84	70.66	3.07	53.09	87.29	0.15	0.62	76.12	54.61	42.71	0.179	0.047	0.000	0.024	0.020	0.000
09/03/98	1,503.41	23.83	63.09	1.33	5.18	7.43	73.08	5.21	75.96	2.39	54.48	87.99	0.13	0.61	78.91	55.40	41.09	0.174	0.041	0.000	0.037	0.015	0.000
10/03/98	1,489.60	24.00	62.07	1.19	5.59	7.00	75.32	5.03	66.48	2.71	53.78	88.70	0.17	0.65	78.93	56.29	41.70	0.195	0.048	0.000	0.036	0.016	0.000
11/03/98	1,491.31	23.83	62.58	1.42	5.90	7.21	75.54	5.44	73.17	2.51	53.33	89.66	0.15	0.60	78.00	56.83	43.24	0.194	0.049	0.000	0.040	0.020	0.000
12/03/98	1,483.11	23.83	62.24	1.28	5.66	8.52	75.78	4.29	70.25	2.26	53.46	88.72	0.19	0.66	74.28	54.71	42.29	0.199	0.050	0.000	0.039	0.010	0.000
13/03/98	1,506.49	24.00	62.77	1.36	6.07	8.32	71.24	7.17	67.74	2.44	53.79	88.00	0.22	0.72	78.43	58.08	44.86	0.205	0.046	0.000	0.040	0.007	0.000
14/03/98	1,508.55	23.83	63.30	1.43	5.47	7.68	73.25	5.35	73.99	2.43	54.28	89.58	0.17	0.55	78.24	60.45	46.58	0.203	0.047	0.000	0.040	0.011	0.000
15/03/98	1,499.02	24.00	62.46	1.45	6.09	7.45	73.93	6.22	73.51	2.57	53.93	89.81	0.14	0.60	77.59	60.40	46.09	0.203	0.043	0.000	0.040	0.012	0.000
16/03/98	1,485.66	23.83	62.34	1.28	5.79	7.41	74.47	5.46	71.58	2.32	53.55	89.09	0.16	0.63	76.68	59.94	44.65	0.203	0.032	0.000	0.026	0.011	0.000
17/03/98	1,512.55	24.00	63.02	1.40	5.43	7.20	73.89	5.33	75.31	2.35	54.12	89.97	0.15	0.52	80.89	64.79	50.21	0.194	0.035	0.000	0.025	0.010	0.000
18/03/98	515.13	8.00	64.39	1.45	5.73	7.96	74.34	5.38	73.10	2.44	54.98	90.26	0.18	0.54	79.31	68.61	51.81	0.198	0.037	0.000	0.024	0.011	0.000
19/03/98	1,326.97	21.00	63.19	1.41	5.35	7.45	74.30	4.70	79.00	1.98	55.08	88.54	0.14	0.60	81.70	56.40	41.10	0.194	0.034	0.000	0.023	0.015	0.000
20/03/98	1,546.72	24.00	64.45	1.16	5.19	7.63	74.17	4.50	66.08	2.94	54.36	89.80	0.16	0.53	80.18	55.29	40.05	0.185	0.031	0.000	0.023	0.012	0.000
21/03/98	1,533.63	23.83	64.36	1.52	5.28	8.06	75.59	4.66	71.36	3.30	54.56	89.59	0.17	0.54	79.26	53.63	38.18	0.178	0.030	0.000	0.023	0.011	0.000
22/03/98	1,553.37	24.00	64.72	1.26	5.09	7.35	76.79	4.13	68.52	3.06	54.21	89.67	0.15	0.53	79.46	54.93	40.06	0.173	0.029	0.000	0.022	0.011	0.000
23/03/98	1,542.74	23.83	64.74	1.13	5.37	6.61	76.94	4.23	64.30	3.00	53.87	90.04	0.15	0.55	77.38	52.75	38.35	0.166	0.031	0.000	0.023	0.012	0.000
24/03/98	1,548.34	24.00	64.51	1.33	5.47	5.46	75.37	5.41	63.16	3.94	53.57	90.60	0.14	0.51	83.29	55.77	40.24	0.164	0.025	0.000	0.029	0.012	0.000
25/03/98	1,566.67	24.00	65.28	1.61	5.85	6.57	75.66	5.20	68.59	3.53	54.18	90.21	0.18	0.56	81.04	55.25	39.83	0.173	0.023	0.000	0.029	0.010	0.000
26/03/98	1,535.00	23.50	65.32	1.84	6.25	6.79	77.54	3.83	70.47	3.39	54.17	91.48	0.21	0.53	80.14	55.07	39.74	0.192	0.024	0.000	0.031	0.009	0.000
27/03/98	1,574.33	24.00	65.60	1.48	5.28	6.09	73.17	6.10	70.42	3.29	54.06	89.39	0.17	0.53	79.97	54.34	39.13	0.194	0.023	0.000	0.030	0.011	0.000
28/03/98	1,563.22	23.83	65.60	1.41	5.20	6.71	74.02	5.75	75.72	2.74	54.52	89.28	0.12	0.53	82.14	55.46	39.62	0.187	0.024	0.000	0.030	0.014	0.000
29/03/98	1,574.12	24.00	65.59	1.34	5.15	6.85	74.46	5.32	74.99	2.77	53.82	88.31	0.11	0.59	80.87	55.57	40.15	0.180	0.021	0.000	0.029	0.010	0.000
30/03/98	1,573.82	23.92	65.80	1.37	5.44	7.33	72.85	6.23	75.39	2.58	54.27	89.31	0.12	0.55	80.22	54.82	39.22	0.187	0.022	0.000	0.030	0.012	0.000
31/03/98	1,575.88	24.00	65.66	1.27	5.04	7.55	74.03	5.60	73.69	2.81	54.10	89.33	0.11	0.52	79.86	53.58	38.01	0.186	0.027	0.000	0.024	0.008	0.000
T O T A L	45,527.79	712.49	63.90	1.33	5.39	7.24	74.41	5.32	70.88	2.81	54.08	88.89	0.16	0.59	78.80	55.70	41.40	0.182	0.035	0.000	0.029	0.012	0.000

Acumulado Anual :

78.49 54.37 40.72