





	26 sep	30 sep	07 oct	14 oct	21 oct	28 oct	04 nov	11 nov	18 nov	25 nov	02 dic	09 dic	16 dic	23 dic	30 dic	06 ene	13 ene	20 ene	27 ene	03 feb	10 feb	17 feb	24 feb	02 mar	09 mar	16 mar	23 mar	30 mar	06 abr	13 abr	20 abr	27 abr	04 may	11 may	18 may	25 may	31 may	
Planned	0.00	343	462	563	733	923	850	1,074	1,327	1,161	1,022	893	1,078	1,212	1,310	1,274	1,321	1,483	1,818	1,887	1,623	1,625	2,193	2,130	1,783	1,653	1,572	1,810	1,050	1,317	945	888	623	501	403	412	306	
Planned cum	0.00	203	424	778	891	988	822	736	979	1,583	1,316	1,214	1,219	1,215	1,167	2,267	1,553	1,478	1,294	966	1,648	1,538	2,260															
Actual	0.00	401	438	499	647	780	762	1,031	1,154	1,492	1,524	1,322	1,568	1,590	1,228	1,631	1,803	1,783	1,547	1,474	1,390	1,134	1,688															
Planned cum	0.00	343	805	1,368	2,101	3,024	3,874	4,948	6,274	7,435	8,457	9,350	10,428	11,640	12,950	14,228	15,545	17,028	18,846	20,533	22,156	23,781	25,974	28,104	29,887	31,540	33,112	34,628	35,678	36,995	37,940	38,828	39,450	39,951	40,355	40,767	41,196	
Actual cum	0.00	203	627	1,405	2,297	3,285	4,107	4,843	5,822	7,405	8,715	9,929	11,148	12,383	13,530	15,791	17,343	18,821	20,115	21,111	22,759	24,295	26,555															
Actual cum	0.00	401	839	1,338	1,986	2,765	3,528	4,559	5,713	7,205	8,729	10,051	11,611	13,201	14,429	16,059	17,863	19,826	21,173	22,647	24,037	25,171	26,779															

Chucapaca Feasibility Study (AMEC) - Manhours Control

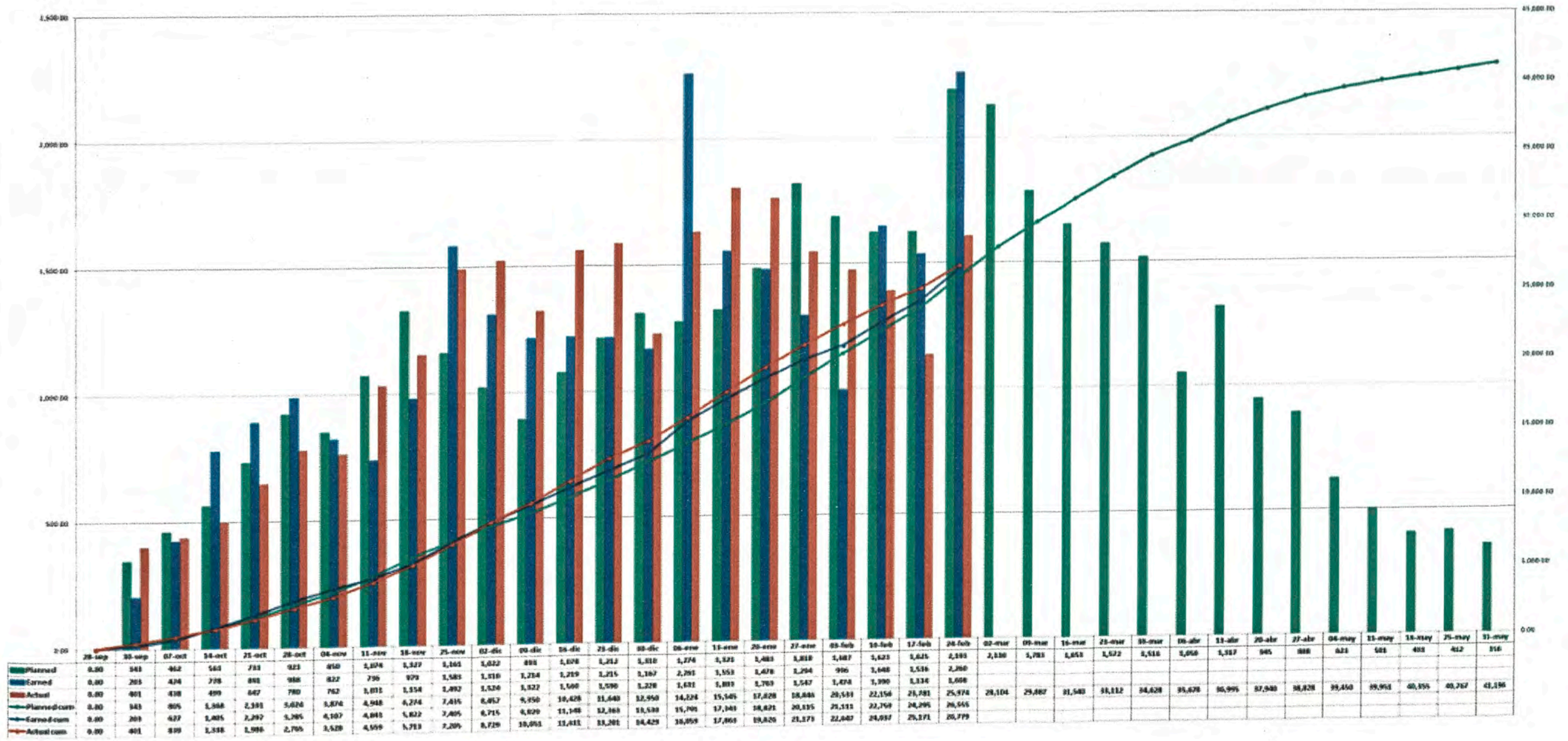


Figura 10: Manpower



		28-sep	30-sep	07-oct	14-oct	21-oct	28-oct	04-nov	11-nov	18-nov	25-nov	02-dic	09-dic	16-dic	23-dic	30-dic	06-ene	13-ene	20-ene	27-ene	03-feb	10-feb	17-feb	24-feb	02-mar	09-mar	16-mar	23-mar	30-mar	06-abr	13-abr	20-abr	27-abr	04-may	11-may	18-may	25-may	31-may						
Early	Period	0%	1%	1%	1%	2%	2%	2%	3%	3%	3%	2%	3%	3%	3%	3%	3%	4%	4%	4%	4%	4%	4%	6%	5%	6%	4%	4%	3%	2%	2%	2%	2%	1%	1%	1%	1%	1%						
Early	Accumulated	0%	1%	2%	3%	5%	7%	9%	12%	15%	18%	20%	22%	25%	28%	31%	34%	38%	42%	46%	50%	54%	58%	62%	67%	71%	76%	80%	83%	86%	88%	90%	92%	94%	96%	97%	98%	99%	100%					
Late	Period	0%	1%	1%	1%	2%	2%	2%	2%	2%	2%	2%	2%	3%	3%	3%	3%	4%	4%	4%	4%	4%	4%	6%	5%	6%	4%	4%	3%	2%	2%	2%	1%	1%	1%	1%	1%							
Late	Accumulated	0%	1%	2%	3%	5%	7%	9%	11%	13%	15%	17%	19%	22%	25%	28%	31%	35%	39%	43%	47%	51%	55%	60%	64%	68%	72%	75%	78%	80%	82%	84%	86%	88%	90%	92%	93%	94%	95%	96%	97%	98%	99%	100%
Earned	Accumulated	0%	1%	2%	3%	5%	7%	10%	12%	15%	20%	24.3%	28.3%	31.3%	35.1%	39.1%	43.6%	48.1%	53%	58%	61%	65%	68%	71%	75%	78%	82%	84%	86%	88%	90%	92%	94%	96%	97%	98%	99%	99%	100%	100%	100%	100%	100%	100%

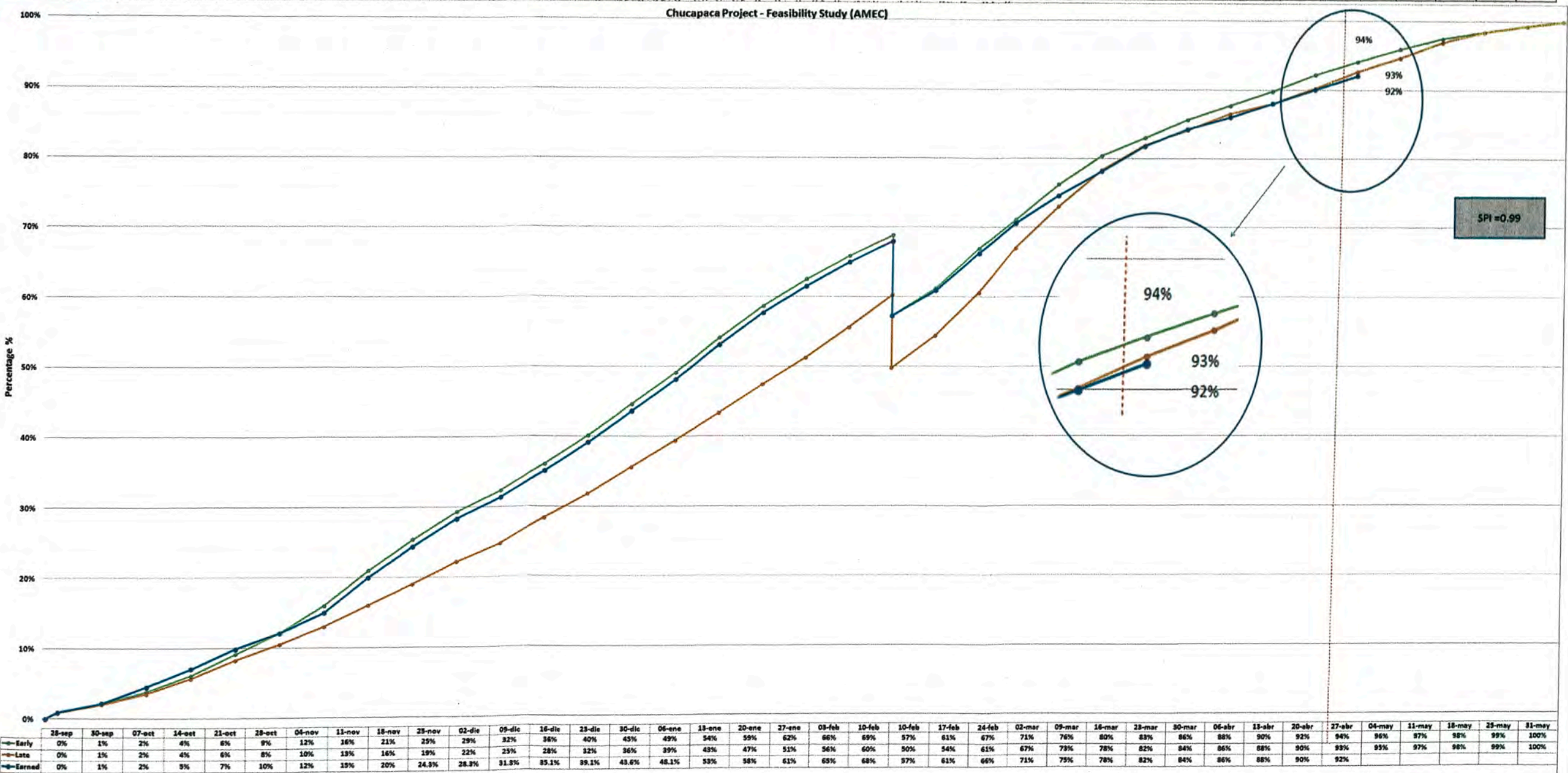


Figura 11: Curva Early Late con el impacto de la orden cambio